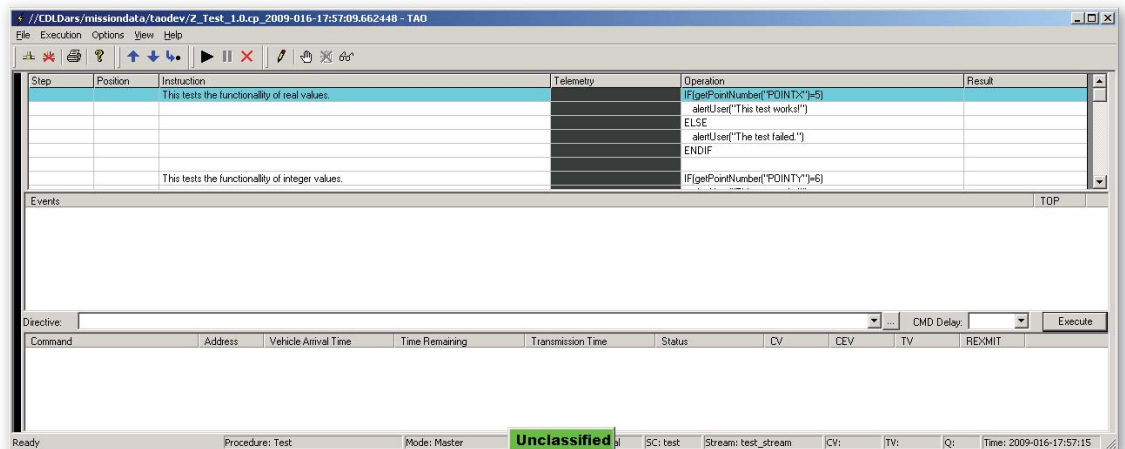


## Product Description

TAO is an automation language that executes spacecraft procedures through the EPOCH Integrated Product Suite. It supports telemetry checking, command and directive transmission, user prompts, master/shadow functionality, and extension functions. TAO has three components: TAO Server, TAO Client, and TAO Simulator. TAO Server coordinates the execution of directives, interfaces with EPOCH Server for execution of directives, and interfaces with the TAO Client to pass execution information to the TAO Client GUI. TAO Client is composed of several applications that provide the full lifecycle of a spacecraft procedure – creation, modification, review, approval, execution, response verification, and analysis. Finally, TAO Simulator provides the ability to test TAO procedures by executing them without requiring a full TAO Server/EPOCH environment. Integrated with Integral Systems Cactus security software, TAO's major capabilities are also protected against unauthorized access.



## Features

- Create and edit procedures consisting of spacecraft directives, telemetry points, expressions, and control structures.
- Receive telemetry, transmit directives, and review executing procedures at the operational level.
- Control a procedure in Master mode or observe the live actions of another in Shadow mode.
- Set checkpoints, pause, and resume procedures at the operational level.
- Test procedures without the need for a full TAO Server/EPOCH environment.
- Restrict capabilities per user access privileges via Cactus security software.
- Define frequently used procedures for all spacecraft, a spacecraft family, or a single spacecraft.
- Review procedure revision reports and approve several procedures simultaneously.
- Compare two procedures and display differences between them.
- Play back procedures off-line for analysis.
- Create custom functions and dialogs to extend TAO's capabilities and user interface beyond the original design.
- Define custom variables within procedures that can be substituted by external applications, such as a mission planning system.

# TAO

Executing Spacecraft Procedures through EPOCH IPS